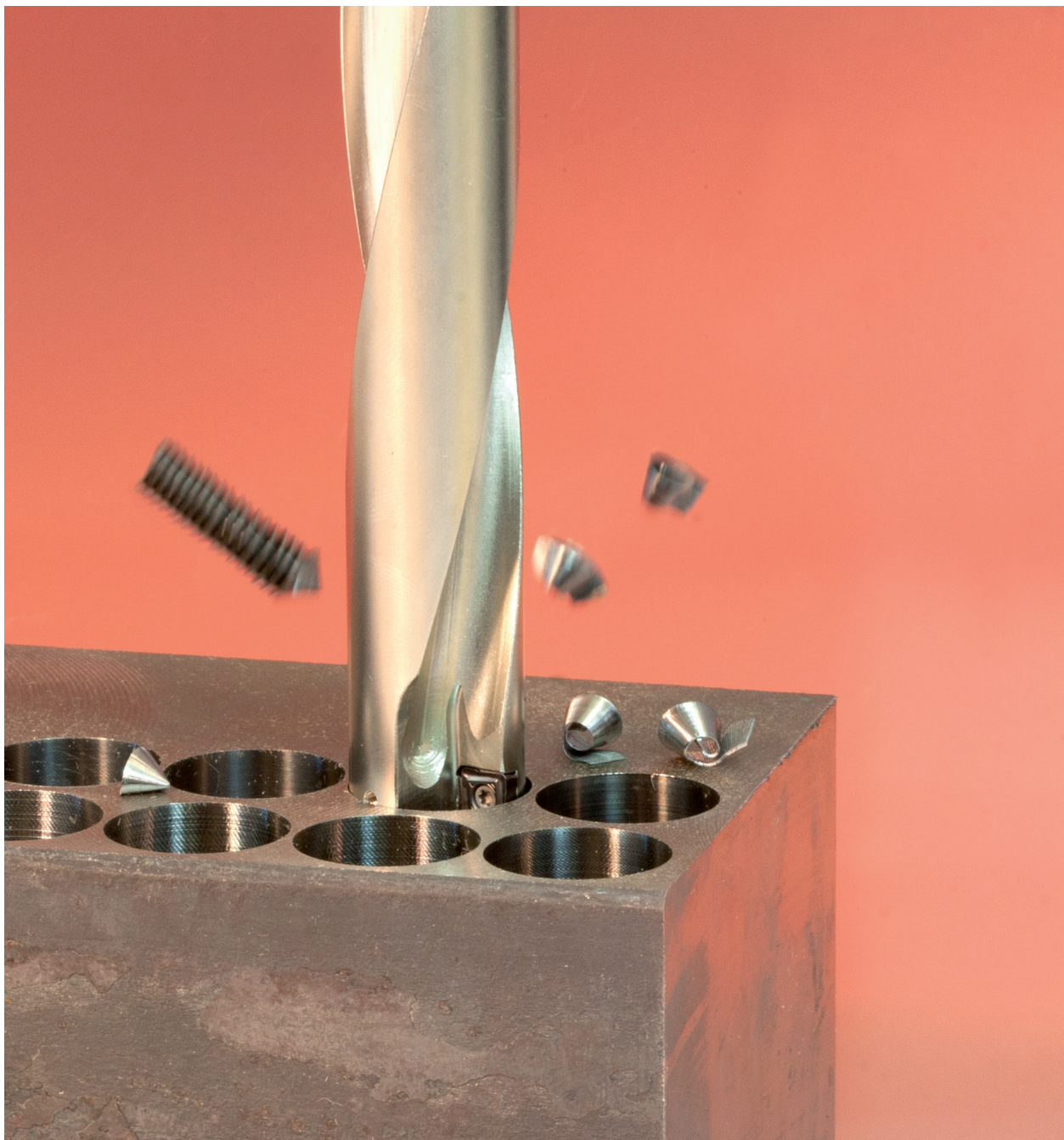


Innovation



MaxiDrill 900 5xD

Maximum precision and tool life



EN



Application - customer benefits

Industries

- General mechanical engineering
- Tool and die industry
- Power generation, turbine construction
- Automotive and high-volume production
- Wind power

Materials

- Steel
- Stainless steels
- Cast iron
- Non ferrous metals

Typical components

- Steel components
- Machine components
- Flanges for wind power plants

Product advantages

Minimal drill wander due to specialized insert geometries



Rigid construction allows maximum feed rates for holes up to 5xD



Insert with 4 cutting edges for solid carbide drilling



Peripheral and central cutting edges have the same geometry, size and grade



Grade for a wide range of applications



YOUR benefits

Excellent drilling action
High process security even with difficult drilling situations

Increased productivity combined with high process security

Optimum economy

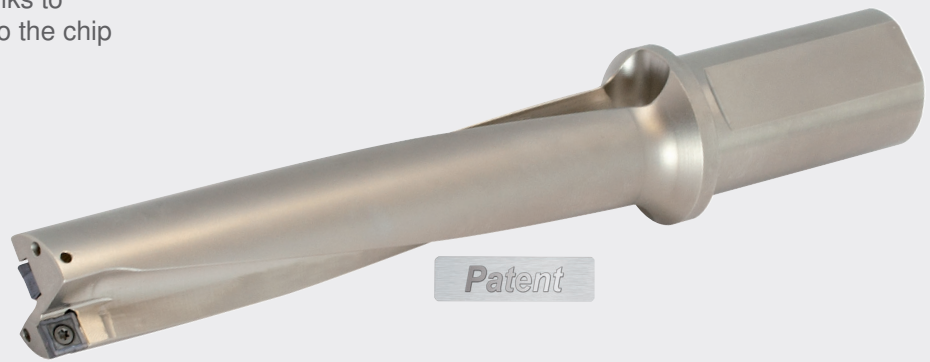
The same insert fits both pockets, preventing mis-location and reducing inventory

Universal application
High flexibility

5xD drilling in the high-feed range

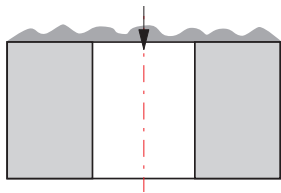
System 900

- Optimum chip evacuation thanks to helical chip pockets adapted to the chip shape and size
- Long tool life thanks to **hard & tough** coating

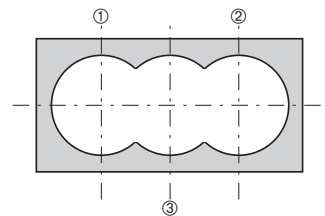


Special application possibilities for the 5xD-range

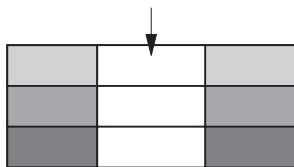
The high performance and capacity of this solid drilling tool is underlined by the flexible application range under most difficult conditions.



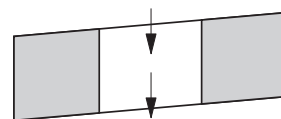
Drilling
through cast iron skin
or welding seam



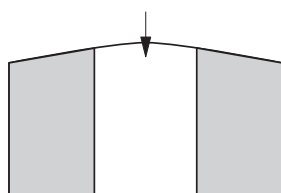
Chain drilling
of a pocket



Stack drilling
possible



Drilling
on inclined surfaces



Drilling of a
convex surface



Geometry

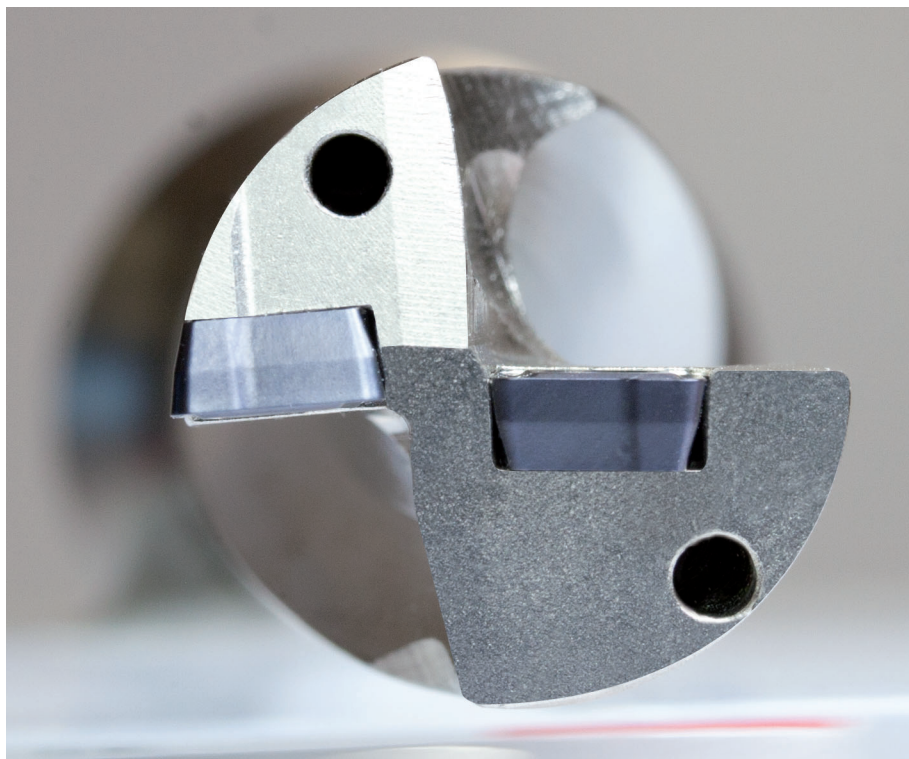
-M30

- 4 cutting edges
- Chip geometry optimized for high feed rates



| | |
|--------------------|---|
| Application | Steel, stainless steel, cast iron, non ferrous metals |
| Grades | CTPP430 |

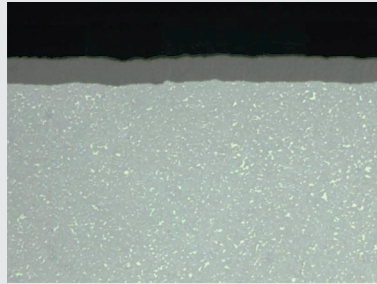
Positioning



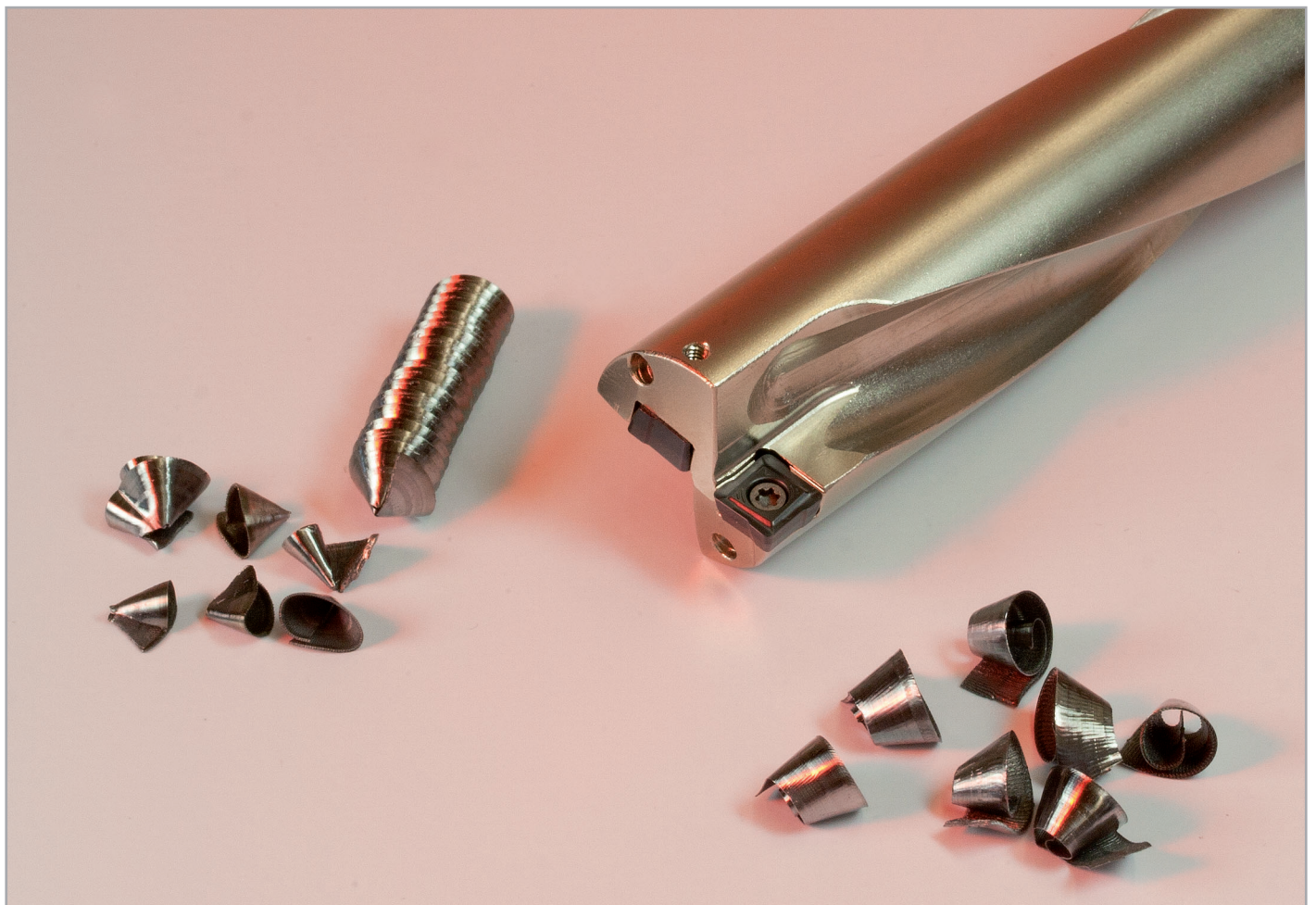
Cutting materials

- Grade suitable for a wide drilling application range
- Optimum combination of toughness and wear resistance
- Same insert may be used for central and peripheral cutting edge
- PVD coating

CTPP430



- Steels in general
- Stainless steels
- Cast iron
- Non ferrous metals





SONT



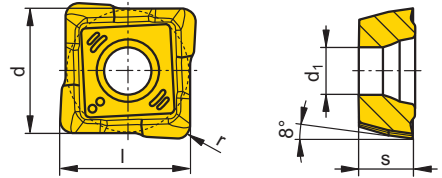
-M30

| (l) [mm] | Type, description | L N R | CTPP430 | | | d | d ₁ | l | s | r |
|-------------|----------------------|-----------|---------|--|--|------|----------------|------|------|------|
| | | | | | | [mm] | [mm] | [mm] | [mm] | [mm] |
| 07 | SONT 072907ER-M30 | R | ● | | | 6,5 | 2,5 | 6,1 | 2,9 | 0,7 |
| 08 | SONT 083308ER-M30 | | ● | | | 7,7 | 2,9 | 7,3 | 3,3 | 0,8 |
| 09 | SONT 093808ER-M30 | | ● | | | 8,9 | 3,5 | 8,5 | 3,8 | |

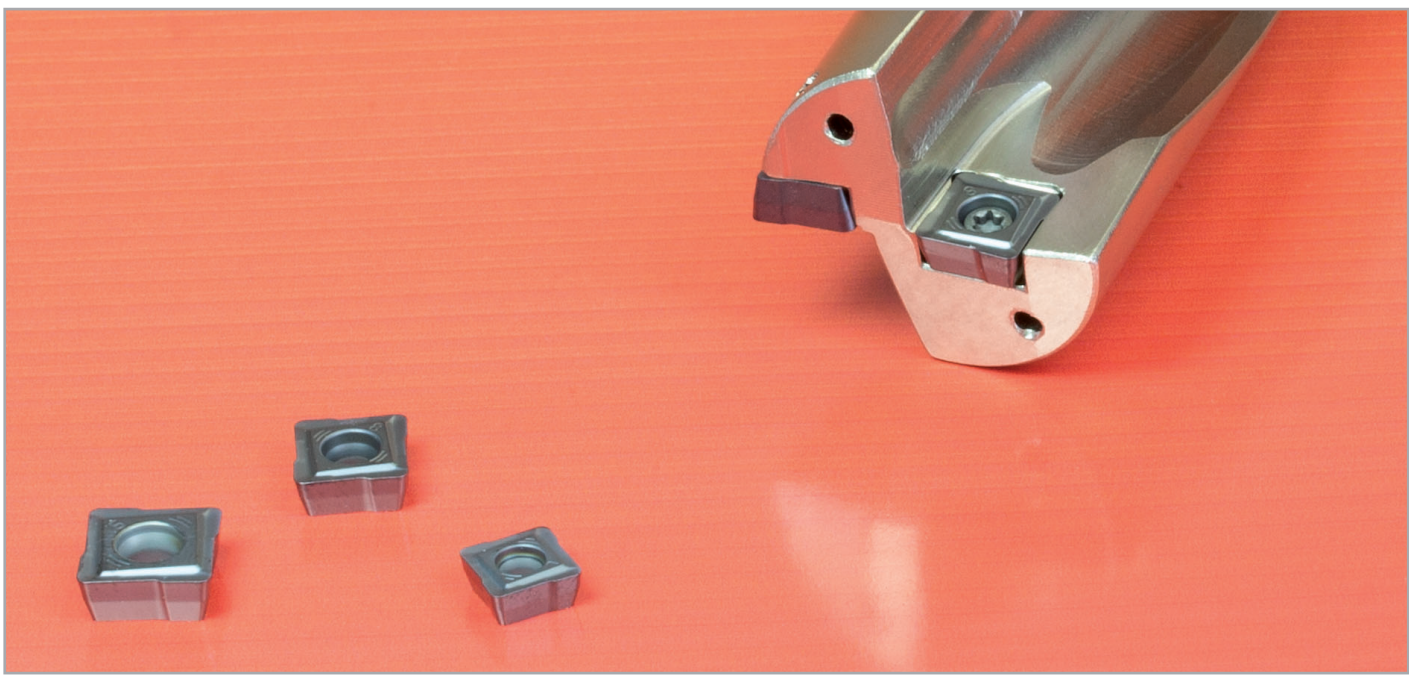


| | | | |
|--------------------|---|---|---|
| Steel | ● | ■ | ■ |
| Stainless | ● | ■ | ■ |
| Cast iron | ○ | ■ | ■ |
| Non ferrous metals | ○ | ■ | ■ |
| Heat resistant | ○ | ■ | ■ |
| Hard materials | ○ | ■ | ■ |

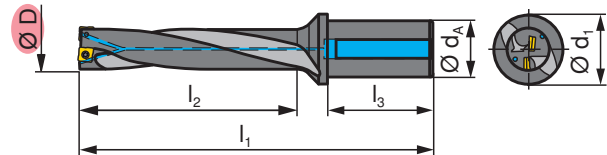
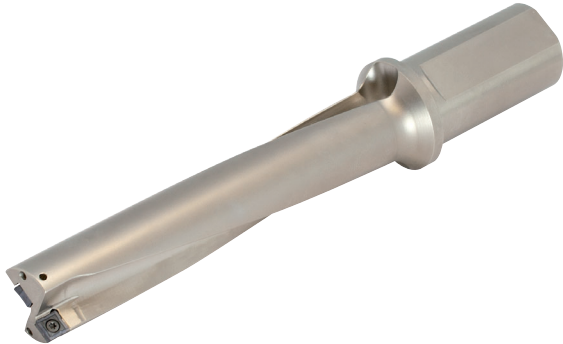
- Main application
- Extended application
- International CERATIZIT range, for present availability see price list

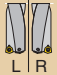



Ordering example: 10 pieces SONT 072907ER-M30 CTPP430







C900



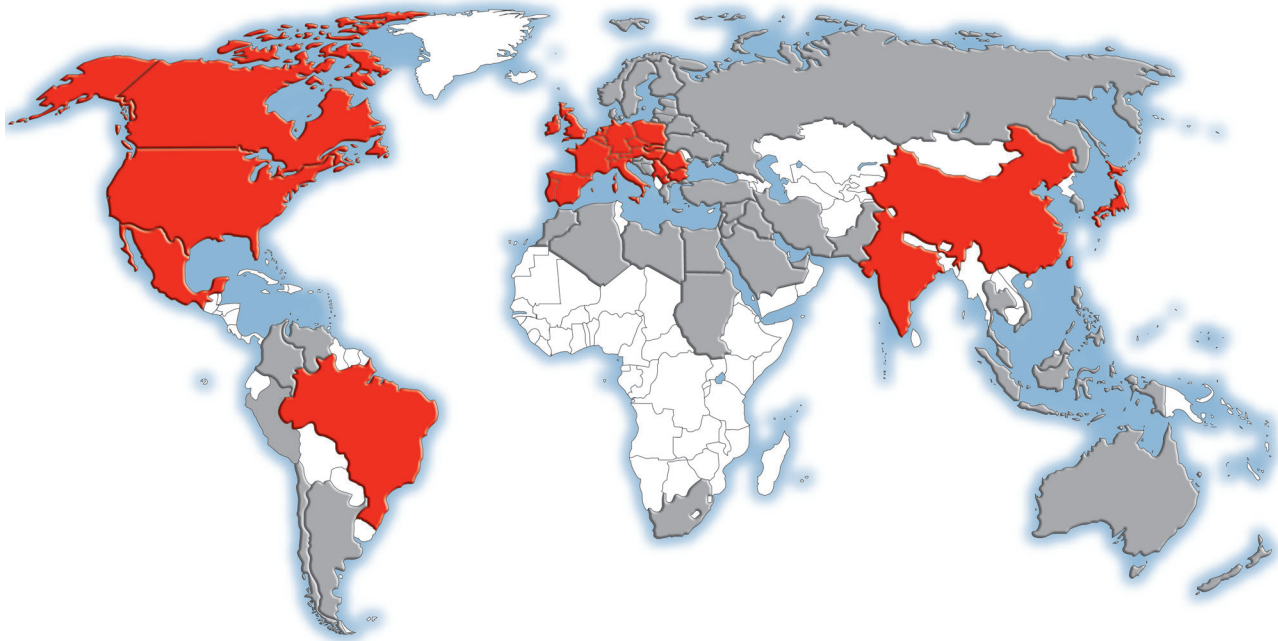
| D [mm] | Type, description |  | d _A [mm] | d ₁ [mm] | l ₁ [mm] | l ₂ [mm] | l ₃ [mm] |  |
|--------|-------------------|---|---------------------|---------------------|---------------------|---------------------|---------------------|---|
| 21 | C900.5D.210.R.07 | R | 25 | 32 | 180 | 105 | 56 | SONT 07... |
| 22 | C900.5D.220.R.07 | | | | 184 | 110 | | |
| 23 | C900.5D.230.R.07 | | | | 189 | 115 | | |
| 24 | C900.5D.240.R.08 | | 32 | 40 | 203 | 120 | 60 | SONT 08... |
| 25 | C900.5D.250.R.08 | | | | 208 | 125 | | |
| 26 | C900.5D.260.R.08 | | | | 212 | 130 | | |
| 27 | C900.5D.270.R.08 | | | | 217 | 135 | | |
| 28 | C900.5D.280.R.09 | | | | 221 | 140 | | |
| 29 | C900.5D.290.R.09 | | | | 226 | 145 | | |
| 30 | C900.5D.300.R.09 | | 230 | 150 | SONT 09... | | | |
| 31 | C900.5D.310.R.09 | | 235 | 155 | | | | |
| 32 | C900.5D.320.R.09 | | 239 | 160 | | | | |

Ordering example: 1 piece C900.5D.210.R.07

Ordering example: cutter body, insert clamping screws

|  | D [mm] |  |  |  |
|---|--------|---|--|---|
| SONT 07... | 21-23 | 10009244/M2,2X5/07IP | 10006918/TORX 07IP | DMSD 1,0Nm/SORT 07IP |
| SONT 08... | 24-27 | 10009243/M2,2X6/08IP | 10000276/TORX 08IP | DMSD 1,2Nm/SORT 08IP |
| SONT 09... | 28-32 | M3X7-09IP/10003007 | 10009333/TORX 09IP | DMSD 2,2Nm/SORT 09IP |

CERATIZIT worldwide



- CERATIZIT worldwide production sites and support centres
- CERATIZIT worldwide distribution partner network



www.ceratizit.com

Parent company in Luxembourg

CERATIZIT Luxembourg Sàrl
Route de Holzem 101
L-8232 Mamer
Tel.: +352 312 085-1
Fax: +352 311 911
E-mail: info@ceratizit.com
www.ceratizit.com

Contact for further information:

